

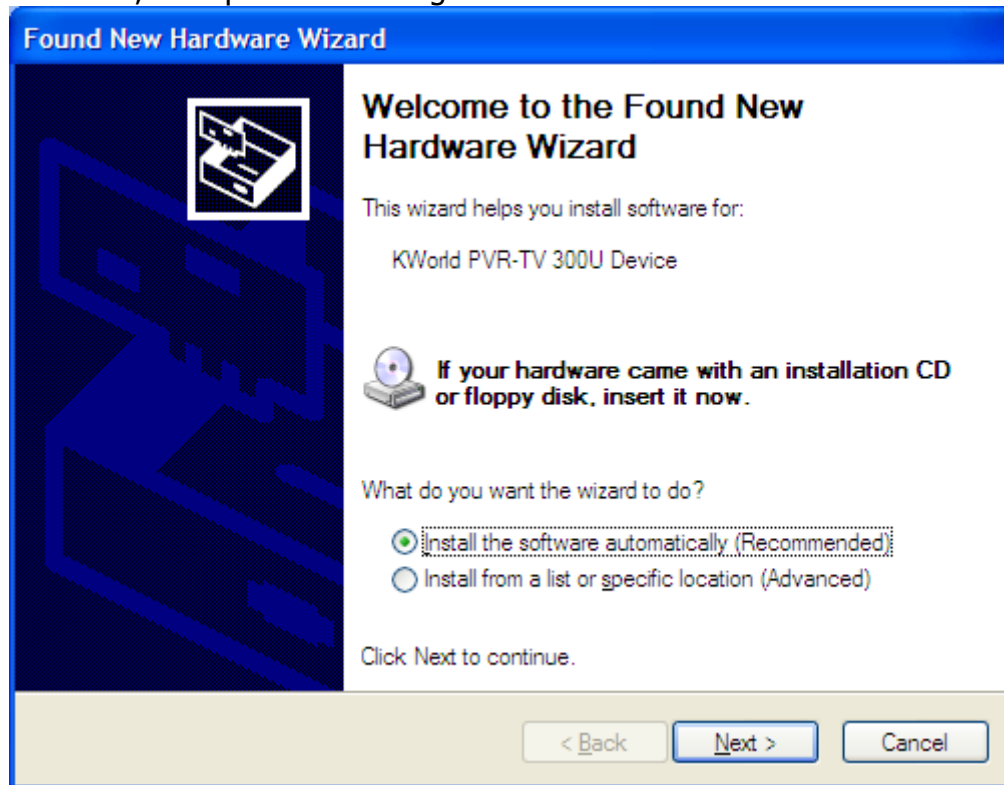
Installing your USB TV Tuner

A USB TV Tuner enables the viewing of a television signal on a computer. To use the Kworld PVR 3000 USB TV Tuner on your laptop or desktop, please follow the steps below:

1. Connect a coax cable to the coax connection on your wall and to the USB device. Connect the USB device to an available USB port on your computer, as shown below. Use the silver USB extender if you don't wish for the Tuner to stick directly out from your laptop.

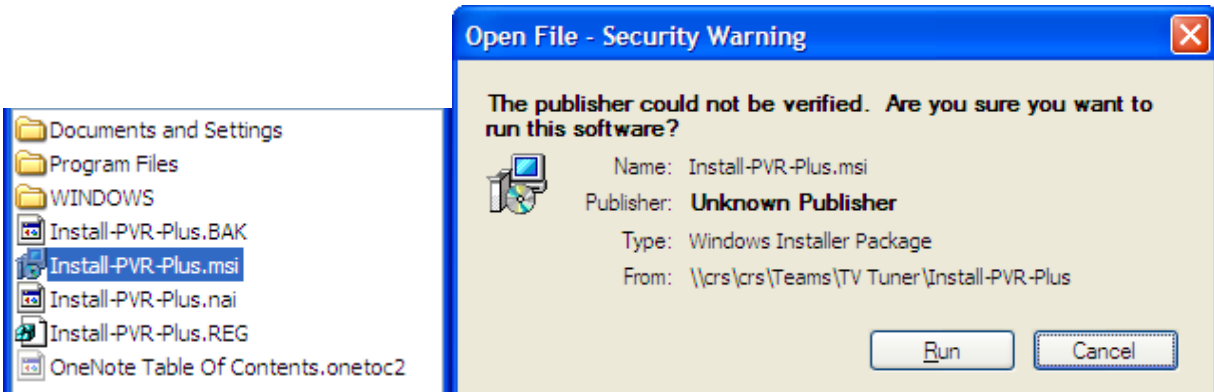


2. When the Found New Hardware wizard comes up, press *Cancel*. It may be displayed a second time; if so press *Cancel* again.

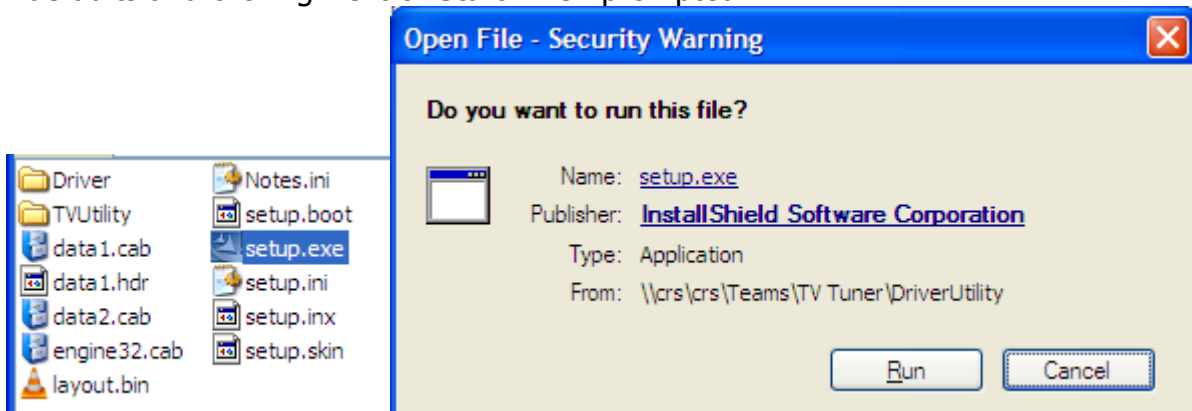


3. Double click on *My Computer* and browse to your *P:* drive. Open the folder labeled *Teams*, then *TV Tuner*, then *Install-PVR-Plus*. Double click the file called *Install-PVR-*

Plus (with the icon that looks like a computer). Then click the *Run* button. This will initiate the installation of the PVR Plus software. The software will install, and a shortcut will be added to the desktop.



4. Use the back button to get back to the *TV Tuner* folder. Open the folder labeled *DriverUtility*. Initiate the installation of the Driver Utility by double-clicking on the *Setup* file and then clicking *Run*. Follow the onscreen instructions accepting all defaults and clicking *Next* or *Start* when prompted.



5. You should be given the direction to restart your computer. Please do so at this time.

Using your TV Tuner

1. Once the computer has restarted, launch the PVR Plus software by double clicking the icon on the desktop.



2. When the software launches, click on the picture of the television to launch the television viewing application.

3. A warm-up screen will appear. Please wait for the software to fully load.



4. Once the application has launched, there will be a control panel in which you can select specific channels. Use the on-screen remote's up and down arrows to browse available channels, and control other aspects of the viewer just as you would with a television remote.



5. To view television in full screen mode, click the *Maximize* button on the top of the television viewer. Press escape on the keyboard to escape from full screen mode.



6. When finished viewing, click the *X* in the corner of the application to exit.



Troubleshooting

If there is no viewable signal, confirm that your cable is connected to the PC and to the coax jack on the wall. If you suspect there may not be a signal coming from your coax jack, test it by connecting to one you know works.

If you plug the USB device into a USB port other than the one used during the original installation, you may be prompted again to install the hardware with the Install New Hardware wizard. Because you've already run the driver installation once, you should be able to click Next and allow the driver installation to occur automatically. If prompted, click Continue Anyway if notified that the driver is unsigned. You may need to go through the wizard twice; once for the video driver and once for the audio.

Please contact the IT Helpdesk at helpdesk@dysart.org or 876-7071 for assistance with additional problems or if you have questions regarding this setup.