

# Parkview Elementary (K-8)

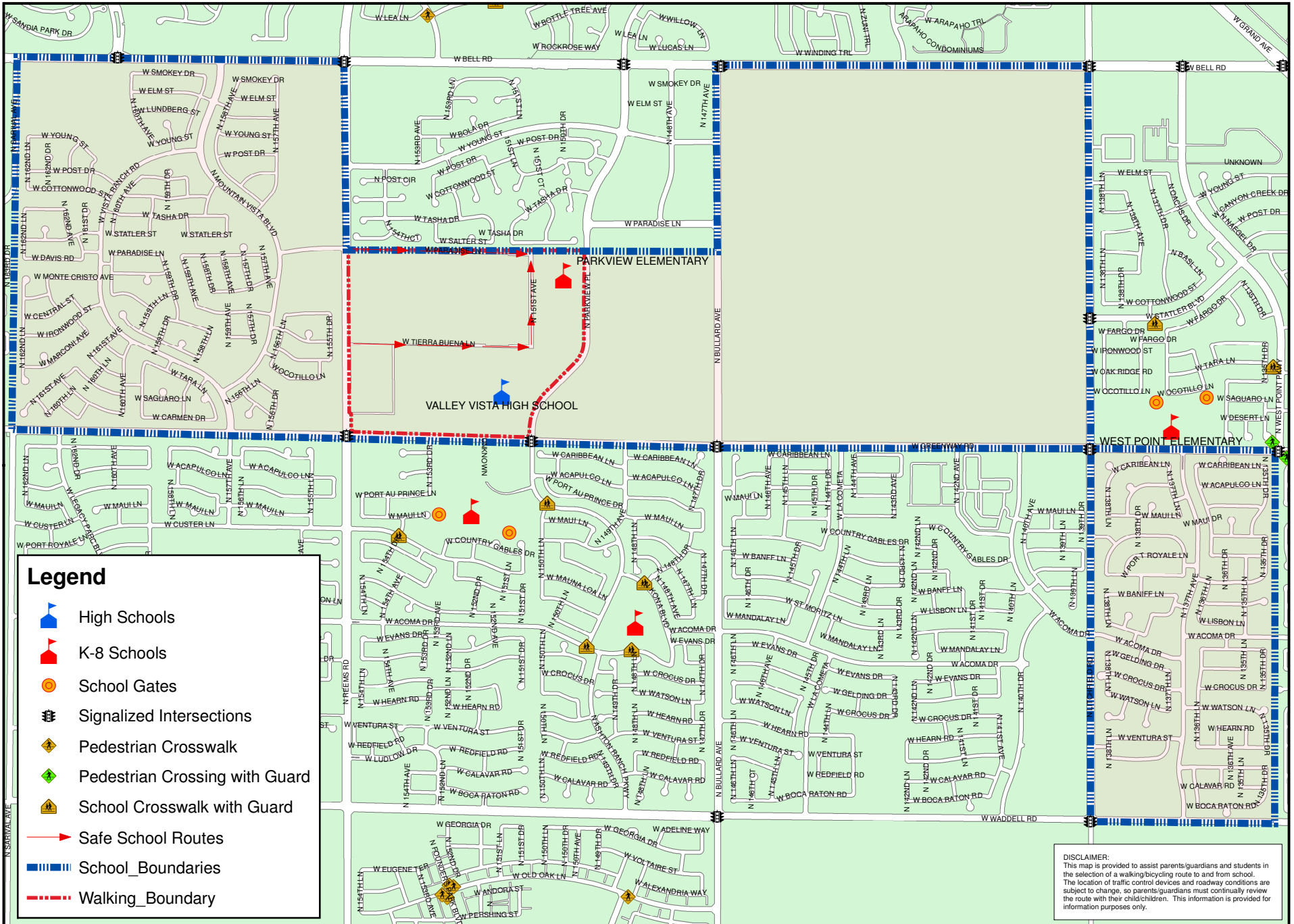
16066 N Parkview Pl  
Bell Times 8:15am - 3:00pm

(623) 523-8650

SY 2008-2009



# Safe Route to School Map



DISCLAIMER:  
This map is provided to assist parents/guardians and students in the selection of a walking/bicycling route to and from school. The location of traffic control devices and roadway conditions are subject to change, so parents/guardians must continually review the route with their child/children. This information is provided for information purposes only.